

SHANE CAMPBELL GALLERY

Architectural Digest
April 2015

Find The Faces In Mark Grotjahn's Paintings Blum & Poe

by Alexa Lawrence

Photography by Douglas M. Parker Studio/© Mark Grotjahn Studio/Courtesy of the Artist and Blum & Poe, Los Angeles



Untitled (Indian #4 Face 45.49), 2014, Mark Grotjahn.

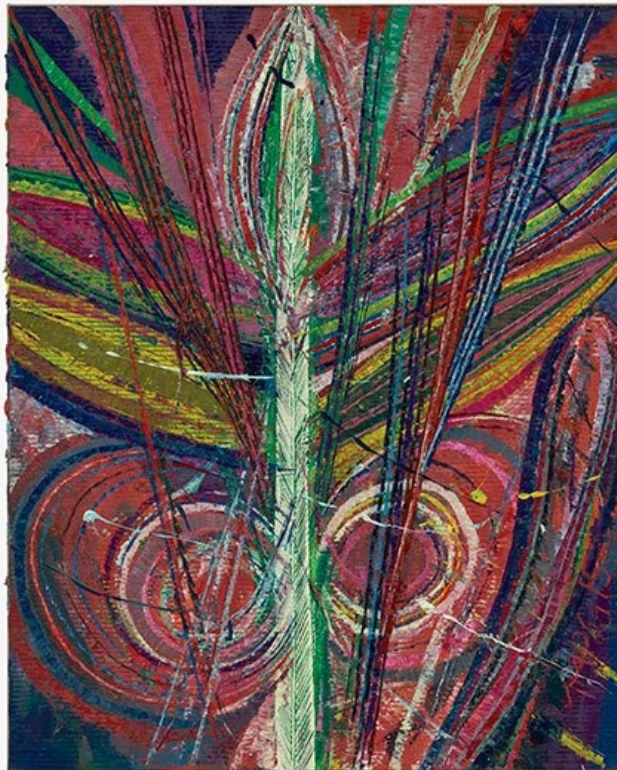
This Friday, artist Mark Grotjahn opens his sixth solo exhibition at the Blum & Poe gallery in Los Angeles. The show will include 15 "Face" paintings from the past two years that continue the artist's investigation of

2021 S WABASH AVE
CHICAGO IL 60616
+1 (312) 226 2223

SHANE CAMPBELL GALLERY

nonrepresentational art. Divided into two categories—“Indians” and “Non-Indians”—these new pieces, each about 50 by 40

inches, are thick with colorful impasto lines and spindles radiating from pale central vertical axes.



Reds, yellows, pinks, blues, purples, greens, and oranges are caked, smeared, and scraped across cardboard mounted on canvas, amassing into something otherworldly, wavering between strange and familiar, whimsical and menacing. Like Grotjahn's "Butterfly" series, these works teeter on the edge of abstraction, with masklike eyes hidden amid his trademark tactile surfaces and lively storms of color. Barnett Newman's "Zip" paintings and Georgia

O'Keeffe's flowers come to mind. But with such heavy materiality (in some works, the raw cardboard underneath is visible), Grotjahn leaves his own mark.

May 1 through June 20 at Blum & Poe, 2727 South La Cienega Blvd., Los Angeles; blumandpoe.com

2021 S WABASH AVE
CHICAGO IL 60616
+1 (312) 226 2223